

**HISTORICAL PRESERVATION COMMISSION
EDGERTON CITY HALL
12 ALBION STREET**

Monday, May 6, 2024 at 6:00 p.m.

NOTICE: The meeting noticed above will also be live streamed on a Zoom platform: To view the meeting, please select the link to the meeting listed on the **calendar events** on the City website's home page at www.cityofedgerton.com. Due to occasional technical difficulties, citizen participation via Zoom may not be possible.

1. Call to Order; Roll Call.
2. Confirmation of Meeting Notice Posted on Friday, May 3, 2024.
3. Approve April 22, 2024 Historical Preservation Commission Meeting Minutes.
4. Consider Certificate of Appropriateness for:
 - A. 2-4 Burdick St.
5. Public Comment.
6. Adjourn

cc: All Committee Members City Administrator
All Council Members
Department Heads Newspapers

NOTICE: If a person with a disability requires that the meeting be accessible or that materials at the meeting be in an accessible format, call the City Administrator's office at least 6 hours prior to the meeting to request adequate accommodations. Telephone: 884-3341

**APRIL 22, 2024 HISTORIC PRESERVATION COMMISSION
MEETING MINUTES
CITY OF EDGERTON**

Chairperson Shawn Prebil called the meeting to order at 6:00 p.m.

Present: Patti Gullickson, Andrew Nelson, Leanne Cantwell, Mona Reiersen and Shawn Prebil.

Excused: Carrie Larson, Kathleen Hessian

Also present: City Administrator Ramona Flanigan, Mayor Christopher Lund and a few citizens

Flanigan confirmed the meeting agenda was properly posted Friday, April 19, 2024 at the Post Office, Edgerton Library, City Hall and the City's website.

ELECT CHAIR: A Reiersen/Gullickson motion to nominate Shawn Prebil as Historic Preservation Commission Chairperson passed on a 5/0 roll call vote.

PUBLIC HEARING: The Historic Commission held a public hearing to hear comments regarding the designation of the noon whistle as an historic improvement.

Hearing no comments, Chairperson Prebil closed the public hearing.

DESIGNATION OF NOON WHISTLE AS AN HISTORIC IMPROVEMENT: A Prebil/Cantwell motion to approve the designation of the noon whistle as an historic improvement passed on a 5/0 roll call vote.

APPROVAL OF MINUTES: A Cantwell/Nelson motion to approve the March 11, 2024 Historic Preservation Commission meeting minutes passed, all voted in favor.

CERTIFICATES OF APPROPRIATENESS: C&M Printing at 104 W Fulton St would like to replace 4 awnings on their building. The awnings will be the same color and style as the existing awnings.

A Prebil/Cantwell motion to approve a Certificate of Appropriateness for 104 W Fulton St for awnings passed on a 5/0 roll call vote.

2 Brothers Bar & Grill at 116 W Fulton St would like to replace the current awning which is damaged. The replacement awning will be black with their logo in white.

A Prebil/Gullickson motion to approve a Certificate of Appropriateness for 116 W Fulton St for awnings passed on a 5/0 roll call vote.

The owner of 7 Albion St would like to build a garage on the lot he owns next to his home. The lot the home is on is not in the historic district, however the lot the garage will go on is in the district. The garage colors will be similar to the house and the cream brick in the downtown. The shingles will match the ones on the house.

A Prebil/Cantwell motion to approve a Certificate of Appropriateness for 7 Albion St for a garage passed on a 5/0 roll call vote.

Being no other business before the Commission, a Prebil/Cantwell motion to adjourn passed, all voted in favor.

Ramona Flanigan/wjl
City Administrator

Memo

To: Historic Commission

From: Staff

Date: 4/24/2024

Re: May 6, 2023 Meeting

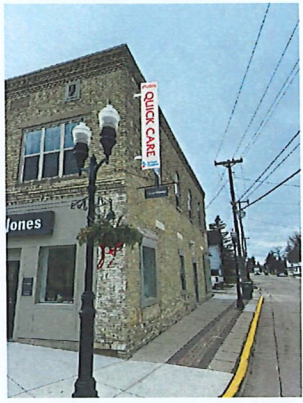
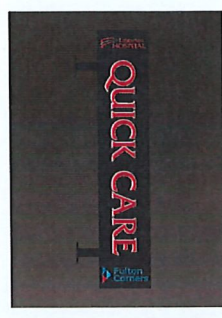
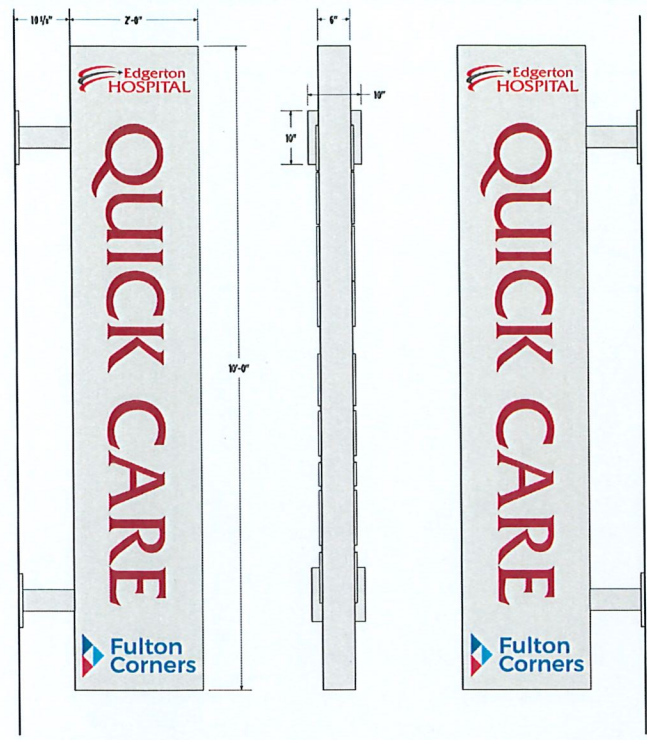
Application for a Certificate of Appropriateness at 2-4 Burdick St: The tenant of 4 Burdick Street, Edgerton Hospital and Health Services, is requesting a Certificate of Appropriateness for the following signs: a plastic, internally lit projecting sign (on the W Fulton Street facade); and two advertising signs on the two entrances on Burdick Street. (See attached). The signs are gray with red letters and blue logos.

The design guidelines (attached) do not support, plastic internally lit signs. The design guidelines recommend signs be lit by an external source. The Commission has permitted internally lit signs in the past, including the Edward Jones sign on the building. The signs will require a variance from the sign ordinance due to the number of signs and the size of the signs.

IF THIS PRINTS ONTO ARTWORK PAGE THE FILE HAS BEEN SIZED TO FIT PAPER AND WILL NOT BE TO SCALE - UNCHECK THE FIT TO PAGE BOX IN ADOBE TO PRINT A SCALE PRINT

IF THIS PRINTS ONTO ARTWORK PAGE THE FILE HAS BEEN SIZED TO FIT PAPER AND WILL NOT BE TO SCALE - UNCHECK THE FIT TO PAGE BOX IN ADOBE TO PRINT A SCALE PRINT

IF THIS PRINTS ONTO ARTWORK PAGE THE FILE HAS BEEN SIZED TO FIT PAPER AND WILL NOT BE TO SCALE - UNCHECK THE FIT TO PAGE BOX IN ADOBE TO PRINT A SCALE PRINT



- PAINT COLOR TBD
- TRANSLUCENT VINYL
- TRANSLUCENT VINYL
- TRANSLUCENT VINYL
- TRANSLUCENT VINYL

JOB DESCRIPTION

LED ILLUMINATED DOUBLE SIDED FLAG MOUNTED WALL SIGN

ALUMINUM FABRICATION ROUTED ALUMINUM FACES PAINT TO MATCH WALL COLOR. (2) LOGOS TO BE ROUTED FROM ALUMINUM FACE. BACK WITH ACRYLIC WITH APPLIED TRANSLUCENT VINYL. "QUICK CARE" TO BE 3/4" ACRYLIC PUSH THRU'S WITH APPLIED TRANSLUCENT VINYL.

INSTALL SIGN FLUSH TO EXTERIOR BRICK WALL. CUSTOMER RESPONSIBLE FOR RUNNING ELECTRICAL TO SIGN LOCATION PRIOR TO INSTALLATION.

FILE NAME _____ DATE _____ SCALE _____

JOB NAME _____

LOCATION _____

DRAWN BY _____ SALESMAN _____

REVISOR APPROVED BY _____

AUTHORIZED SIGNATURE _____

DATE _____

TOTAL SQ. FT. OF SIGNAGE: _____ VIEWING DISTANCE OF PRIMARY SIGN COPY: _____

UNLESS OTHERWISE SPECIFIED:
 • ALL BALLASTS WILL BE COLD START ALL-WEATHER BALLASTS • 120V PRIMARY POWER TO SIGNS WILL BE BY OTHERS • ALL DATA LINES TO ELECTRONIC SIGNAGE WILL BE BY OTHERS • ALL PAINT COLORS WILL BE SEMI-GLOSS FINISH
 THIS IS AN ORIGINAL COMPUTER GENERATED COLOR PRINT. COLORS REPRESENTED ON THIS PRINT MAY NOT MATCH THE PMS OR VINYL OR PAINT COLORS EXACTLY. IT IS TO BE VIEWED AS A REPRESENTATION ONLY. ALL DESIGNS & SPECIFICATIONS ARE THE SOLE PROPERTY OF ALPHAGRAPHICS.
 THEY ARE ONLY FOR THE CUSTOMER'S USE IN CONNECTION WITH A PROPOSED PROJECT. ARTWORK AND PRINTED MATERIAL ARE NOT TO BE USED BY ANYONE OUTSIDE OF YOUR ORGANIZATION, NOR IS IT TO BE REPRODUCED, COPIED, OR DISTRIBUTED IN ANY FORM WITHOUT THE CONSENT OF ALPHAGRAPHICS.

alphagraphics Middleton alphagraphicsmiddleton.com 608.836.9999 3223 PARMENTER ST. MIDDLETON, WI 53562

IF THIS PRINTS ONTO ARTWORK PAGE THE FILE HAS BEEN SIZED TO FIT PAPER AND WILL NOT BE TO SCALE - UNCHECK THE FIT TO PAGE BOX IN ADOBE TO PRINT A SCALE PRINT

IF THIS PRINTS ONTO ARTWORK PAGE THE FILE HAS BEEN SIZED TO FIT PAPER AND WILL NOT BE TO SCALE - UNCHECK THE FIT TO PAGE BOX IN ADOBE TO PRINT A SCALE PRINT

IF THIS PRINTS ONTO ARTWORK PAGE THE FILE HAS BEEN SIZED TO FIT PAPER AND WILL NOT BE TO SCALE - UNCHECK THE FIT TO PAGE BOX IN ADOBE TO PRINT A SCALE PRINT

IF THIS PRINTS ONTO ARTWORK PAGE THE FILE HAS BEEN SIZED TO FIT PAPER AND WILL NOT BE TO SCALE - UNCHECK THE FIT TO PAGE BOX IN ADOBE TO PRINT A SCALE PRINT



- PAINT COLOR TBD
- VINYL COLOR TBD
- VINYL COLOR TBD
- VINYL COLOR TBD
- VINYL COLOR TBD
- BLACK VINYL



JOB DESCRIPTION

NON ILLUMINATED WALL SIGNS
FLANGED ALUMINUM FACE. PAINT WHITE. APPLY VINYL GRAPHICS TO FACE. MOUNT TO EXTERIOR WALL WITH BRACKETS.

FILE NAME _____ DATE _____ SCALE _____
 JOB NAME _____
 LOCATION _____
 DRAWN BY _____ SALESMAN _____
 DESIGN APPROVED BY _____
 AUTHORIZED SIGNATURE _____
 DATE _____

TOTAL SQ. FT. OF SIGNAGE: VIEWING DISTANCE OF PRIMARY SIGN COPY:

UNLESS OTHERWISE SPECIFIED:
 * ALL BALLASTS WILL BE COLD START ALL-WEATHER BALLASTS * 120V PRIMARY POWER TO SIGNS WILL BE BY OTHERS * ALL DATA LINES TO ELECTRONIC SIGNAGE WILL BE BY OTHERS * ALL PAINT COLORS WILL BE SEMI-GLOSS FINISH.
 THIS IS AN ORIGINAL COMPUTER GENERATED COLOR PRINT. COLORS REPRESENTED ON THIS PRINT MAY NOT MATCH THE PMS OR VINYL OR PAINT COLORS EXACTLY. IT IS TO BE VIEWED AS A REPRESENTATION ONLY. ALL DESIGNS & SPECIFICATIONS ARE THE SOLE PROPERTY OF ALPHAGRAPHICS.
 THEY ARE ONLY FOR THE CUSTOMERS USE IN CONNECTION WITH A PROPOSED PROJECT. ARTWORK AND PRINTED MATERIAL ARE NOT TO BE USED BY ANYONE OUTSIDE OF YOUR ORGANIZATION, NOR IS IT TO BE REPRODUCED, COPIED OR EXHIBITED IN ANY FORM WITHOUT THE CONSENT OF ALPHAGRAPHICS.

alphaGraphics alphagraphicsmiddleton.com 608.836.9999 3223 PARMENTER ST. MIDDLETON, WI 53562

IF THIS PRINTS ONTO ARTWORK PAGE THE FILE HAS BEEN SIZED TO FIT PAPER AND WILL NOT BE TO SCALE - UNCHECK THE FIT TO PAGE BOX IN ADOBE TO PRINT A SCALE PRINT